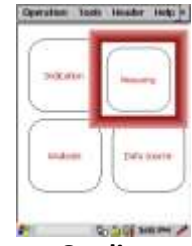


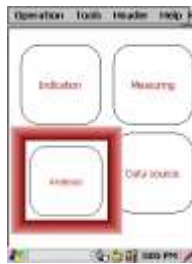
Program unit



Machine test



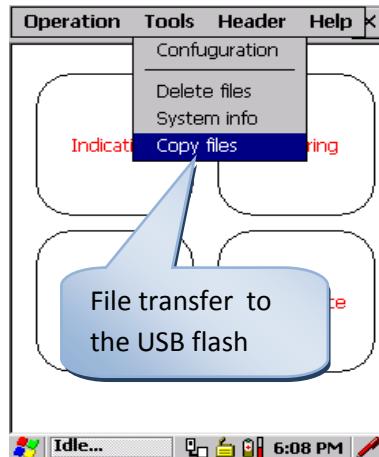
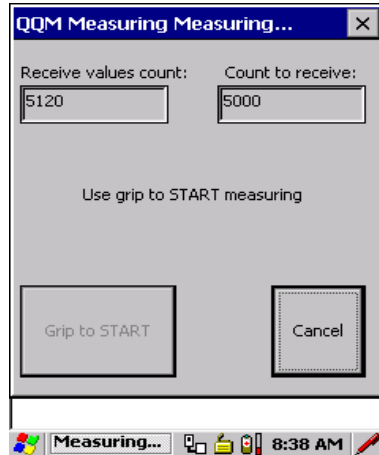
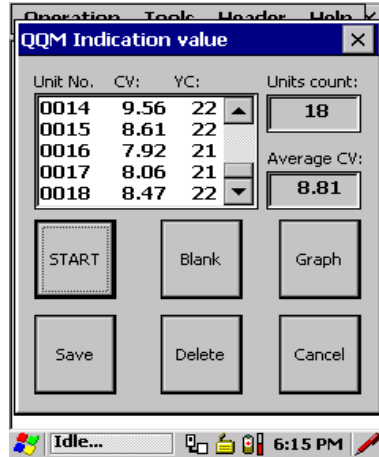
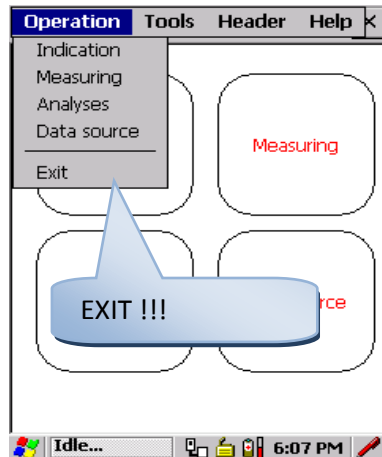
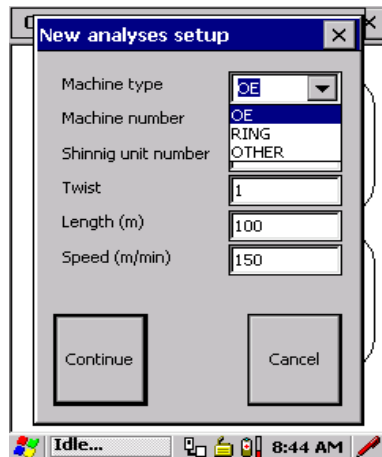
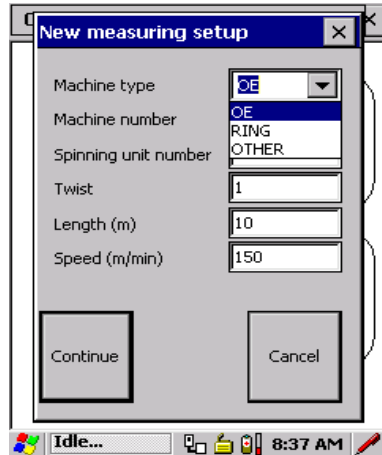
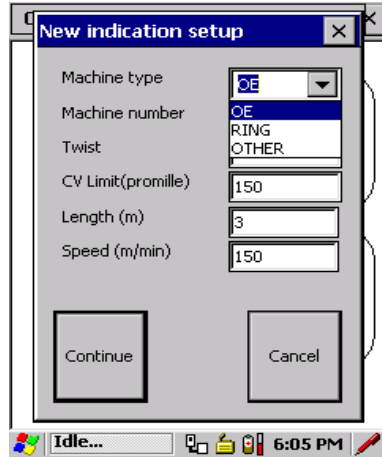
Quality verification



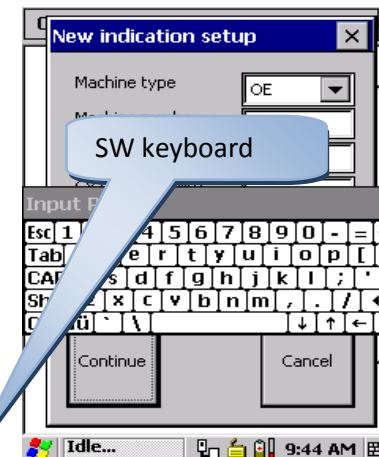
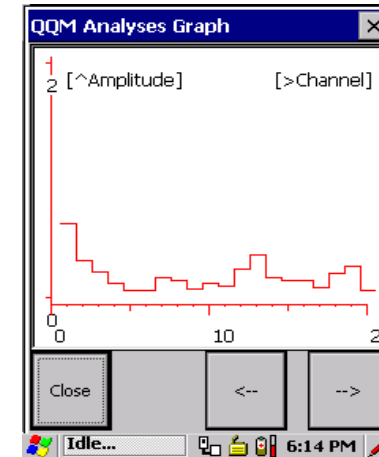
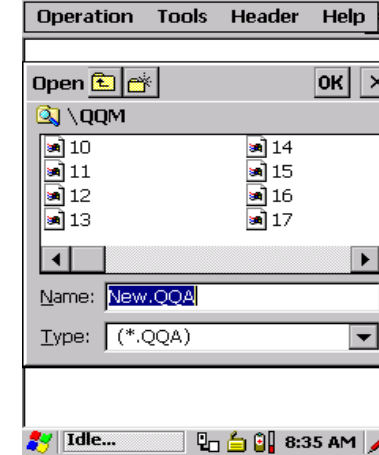
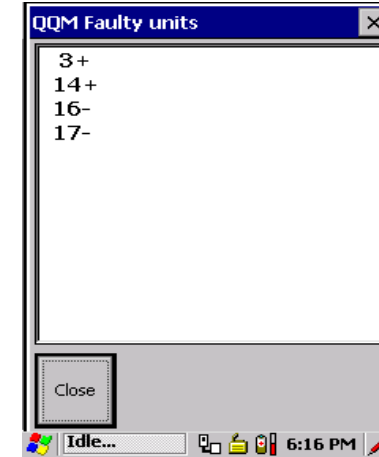
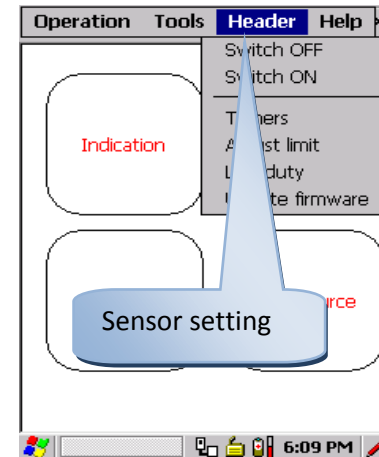
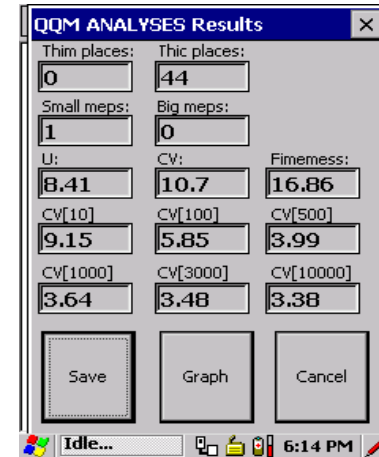
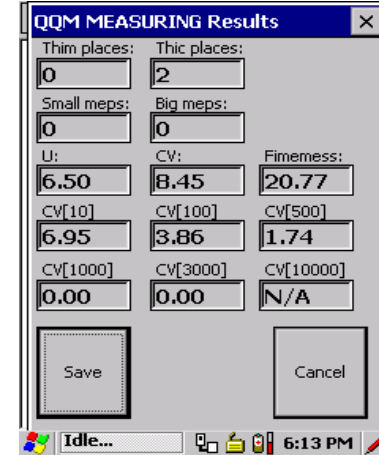
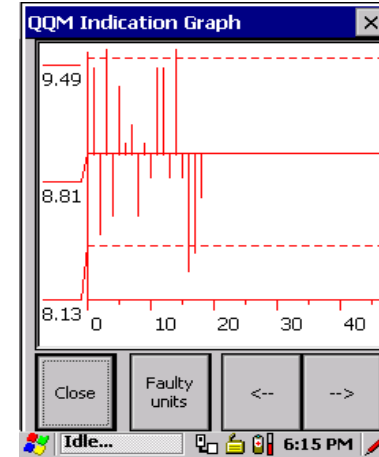
Quality verification



Measuring setup



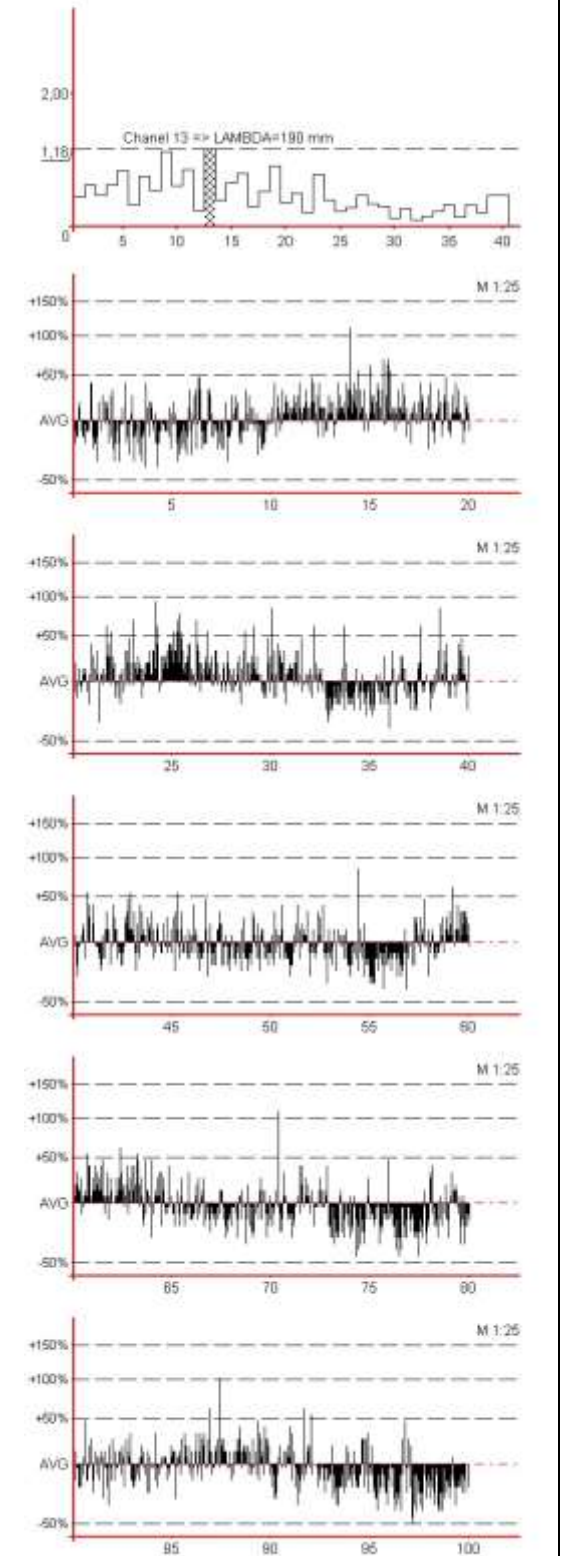
QQM4 Results



PC printed vision of results

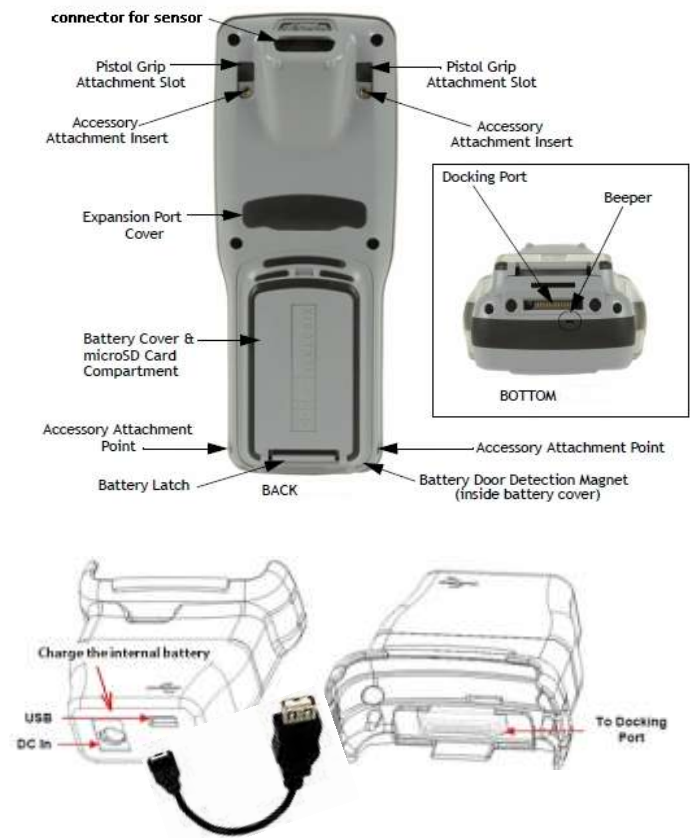
Measuring PROTOCOL

Measuring No.	136	Printing date	28.1.2011
Machine No.	10021 / 0	Printing time	21:56:08
Length of meas.	100		
Speed	64	Measuring date	25.1.2011
Twist	0,00	Measuring time	02:54:27 - 08:55:57
Note			
Yarn count	24,34		
U[%]	14,10	CV[%]	18,80
CV[10]	16,41	CV[50]	8,57
CV[1000]	6,67	CV[3000]	5,04
		CV[10000]	6,30
			3,91
fault type	n	n/mm	n/mile
thin places (-50%)	181	1810,00	2912,29
thin places (+50%)	691	6910,00	11115,19
small neps (+100%)	105	1050,00	1689,45
big neps (+100%)	18	180,00	282,62





Quick MANUAL



Switch On - [Enter] > 1s
 Switch Off - [FN/BLUE] and [Enter]
 warm reset - [FN/BLUE] + [Enter] > 6s
 cold reset -- [FN/BLUE] + [FN/ORANGE] + [Enter] > 6s